



Lovelace Road, SE21 | £1,999,950

02087028111

[dulwichvillage@pedderproperty.com](mailto:dulwichvillage@pedderproperty.com)

**pedder**  
We live local



# In General

- An attractive semi-detached house in close proximity to Dulwich Village
- Spacious and extended accommodation - 2141 sq ft
- Five bedrooms
- Three bathrooms
- Two reception rooms
- Kitchen/breakfast room
- Utility room, downstairs cloakroom, garage
- Delightful 102' mature garden
- Off street parking
- Popular location close to schools and transport links

# In Detail

An attractive five bedroom semi-detached house for sale located on this much sought after residential road just a short distance from Dulwich Village

The property has been extended, upgraded and modernised to a high standard creating a very well presented family home. With a gross internal area of 2141 sq ft the property offers particularly spacious accommodation arranged over three floors comprising five bedrooms, three bathrooms, two reception rooms, extended kitchen/breakfast room, utility room, downstairs cloakroom and single garage. Externally to the front there is a large drive providing off street parking for several cars and to the rear a most delightful, mature 102' garden.

Both Dulwich Village and Herne Hill are close-by with their range of charming independent shops, cafes and restaurants. Nearby Dulwich Park, Belair Park and Brockwell Park offer beautiful green spaces. The property is also well-positioned for top rated state and independent schools, including Rosendale Road Primary School, Dulwich College, James Allen's Girls School and Alleyn's School. There are excellent rail connections to central London from nearby West Dulwich (Victoria/Blackfriars), Herne Hill (Victoria, Blackfriars, City Thameslink, Kings Cross/St Pancras) and Tulse Hill (London Bridge, Thameslink). Bus routes into central London run along Croxted Road.

Internal viewing of this exceptional family house is advised.

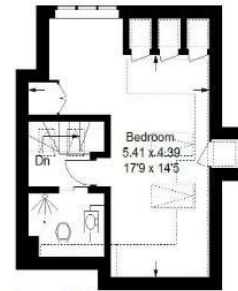
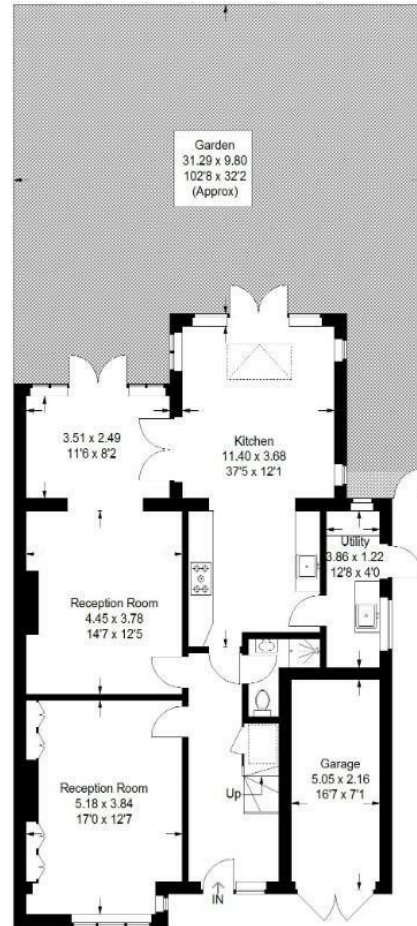
EPC: D | Council Tax Band: G



# Floorplan

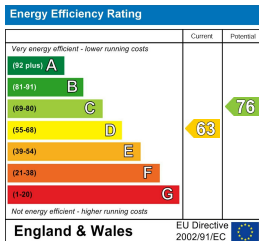
Lovelace Road, SE21

Approximate Gross Internal Area  
 188.0 sq m / 2024 sq ft  
 Garage = 10.9 sq m / 117 sq ft  
 Total = 198.9 sq m / 2141 sq ft



= Reduced headroom below 1.5 m / 5'0

Copyright www.pedderproperty.com © 2026  
 These plans are for representation purposes only as defined by RICS - Code of Measuring Practice.  
 Not drawn to Scale. Windows and door openings are approximate. Please check all dimensions,  
 shapes and compass bearings before making any decisions reliant upon them.



Pedder Property Ltd trading as Pedder for themselves and for the vendor/landlord of this property whose agents they are, give notice that (1) these particulars do not constitute any part of an offer or contract, (2) all statements contained within these particulars are made without responsibility on the part of Pedder or the vendor/landlord, (3) whilst made in good faith, none of the statements contained within these particulars are to be relied upon as a statement of representation or fact, (4) any intending purchaser/tenant must satisfy him/herself by inspection or otherwise as to the correctness of each of the statements contained within these particulars, (5) the vendor/landlord does not make or give either Pedder or any person in their employment any authority to make or give representation or warranty whatsoever in relation to this property.